



FONTANA PRIMA

TILES

Quality for Better Life

ISO 9001:2015 Certified

www.fontana.co.in

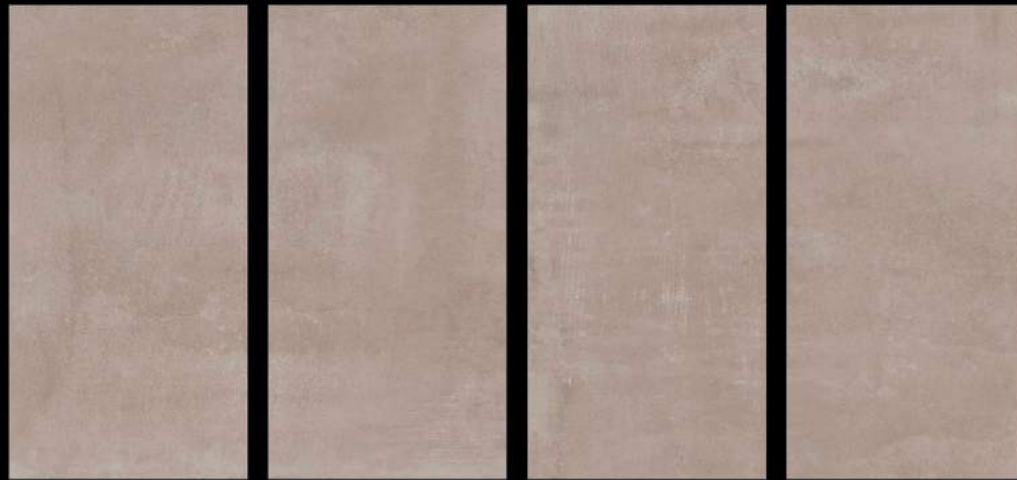


GVT



600x1200 mm
FINISH : MATT

BOLZANO BLANCO

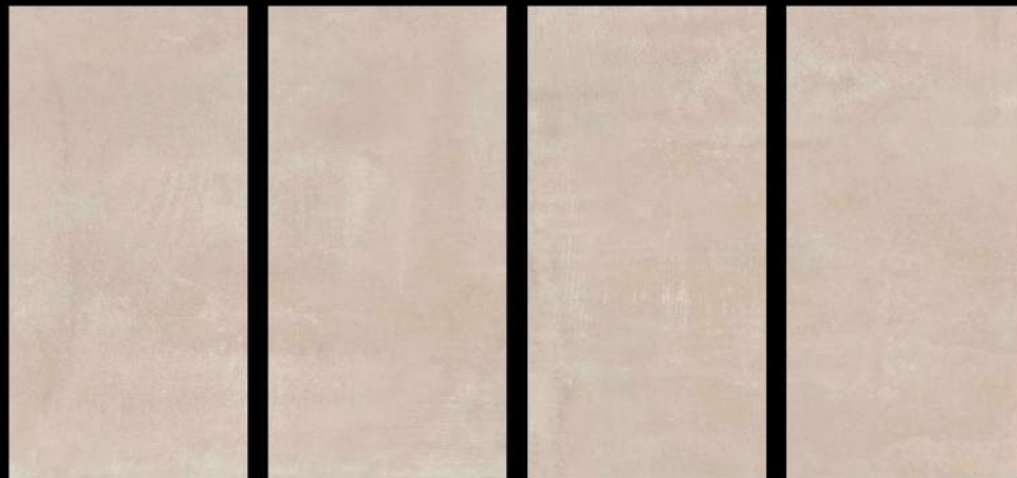
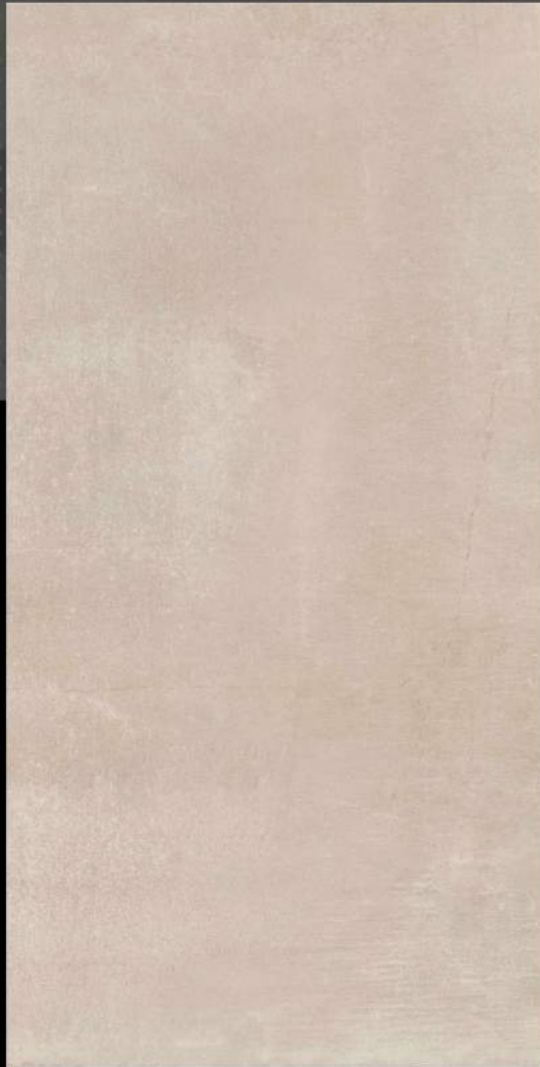


GVT



600x1200 mm
FINISH : MATT

BOLZANO BURLY

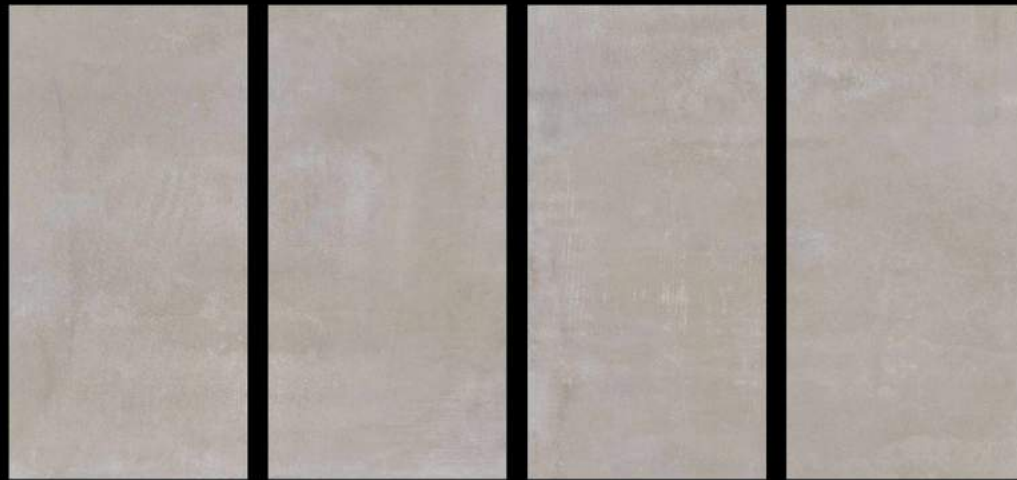


GVT



600x1200 mm
FINISH : MATT

BOLZANO COTTO

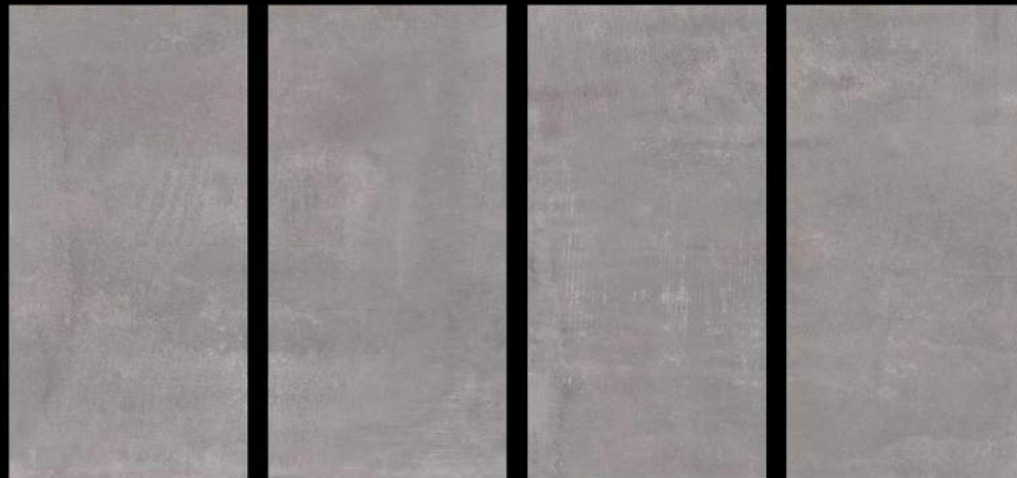


GVT



600x1200 mm
FINISH : MATT

BOLZANO GRIS

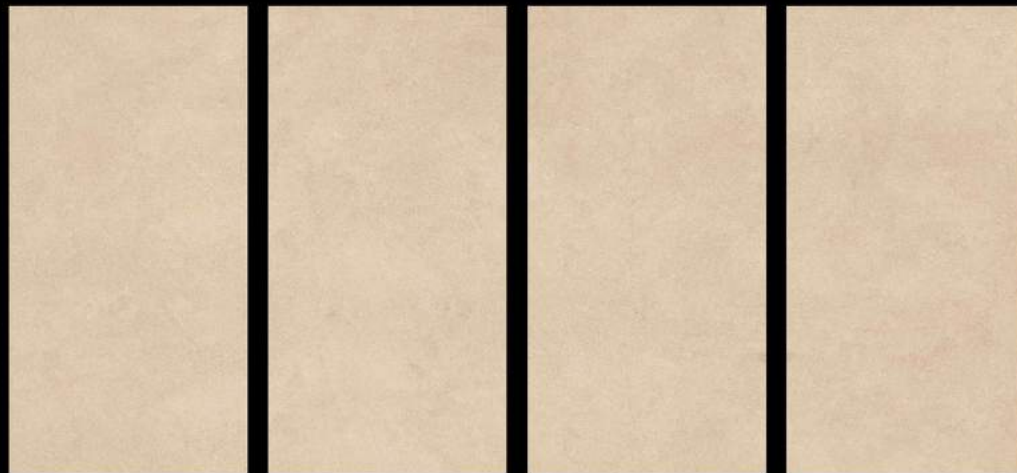


GVT



600x1200 mm
FINISH : MATT

CONCRETE BLANCO

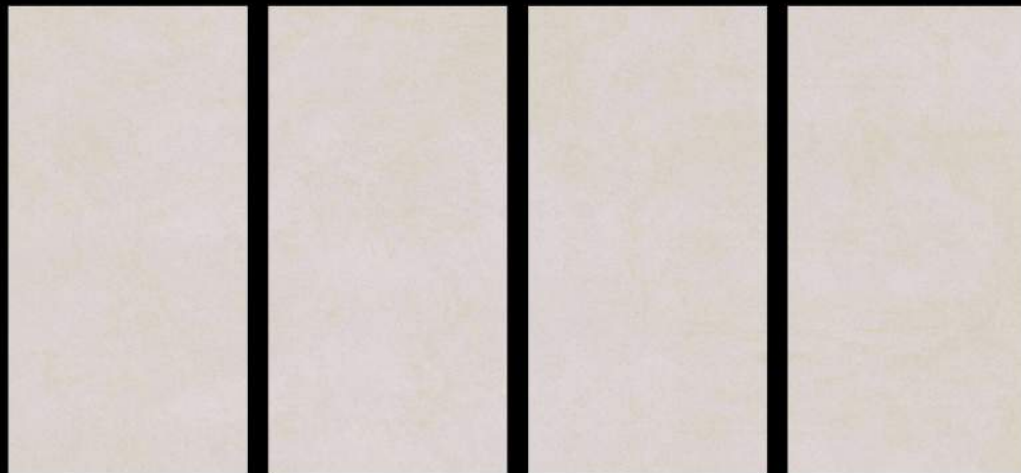
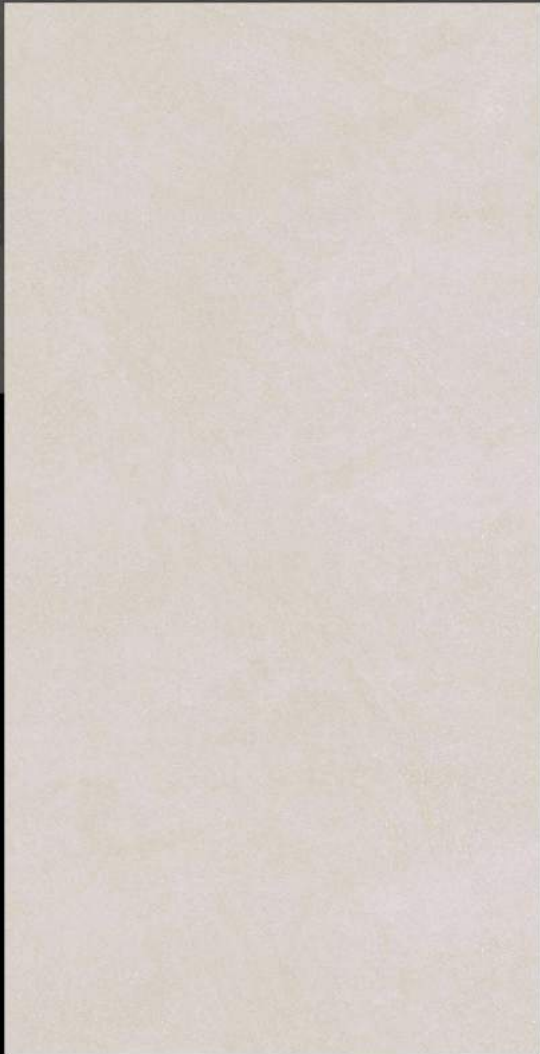


GVT



600x1200 mm
FINISH : MATT

CONCRETE COTTO

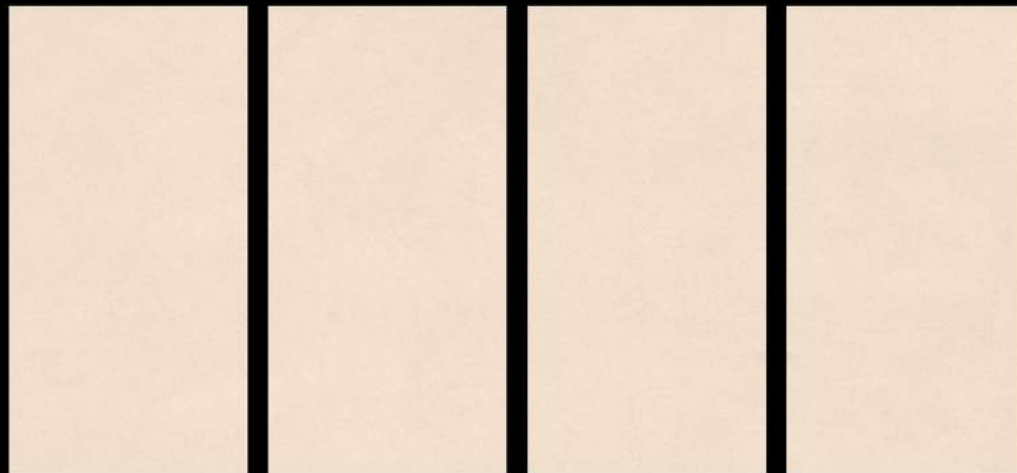
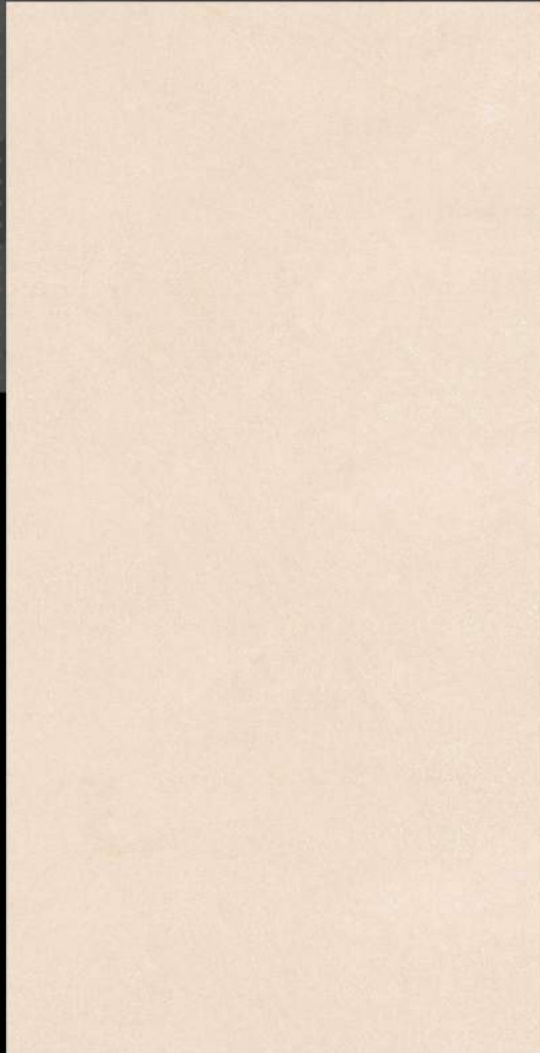


GVT



600x1200 mm
FINISH : MATT

CONCRETE MARRON

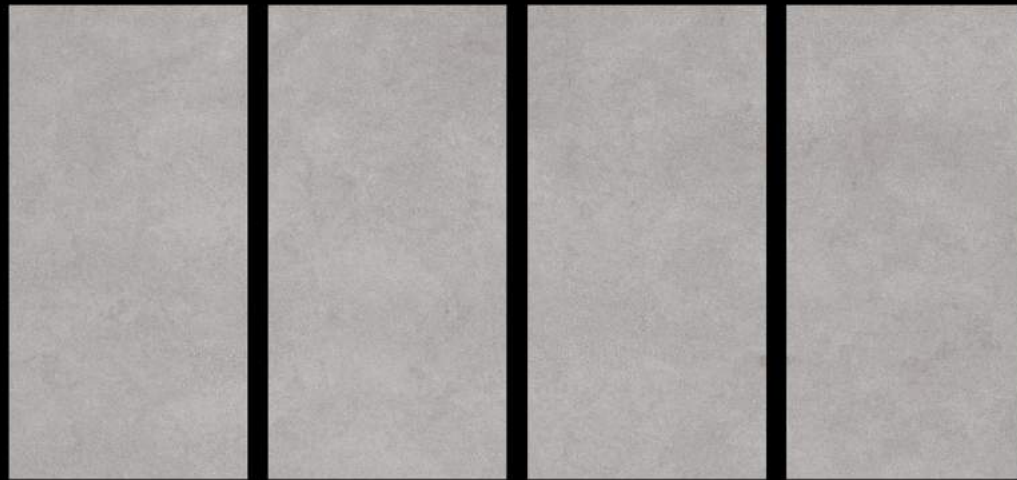


GVT



600x1200 mm
FINISH : MATT

CONCRETE NATURAL

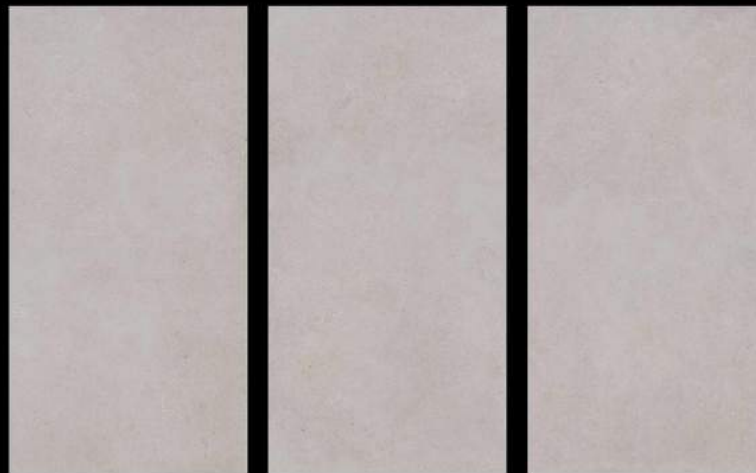


GVT



600x1200 mm
FINISH : MATT

MEDINA BLANCO



GVT



600x1200 mm
FINISH : MATT

MEDINA BURLY

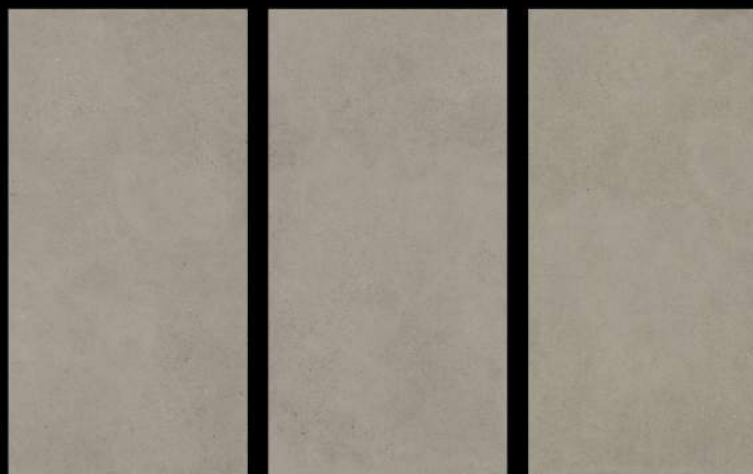


GVT



600x1200 mm
FINISH : MATT

MEDINA COTTO

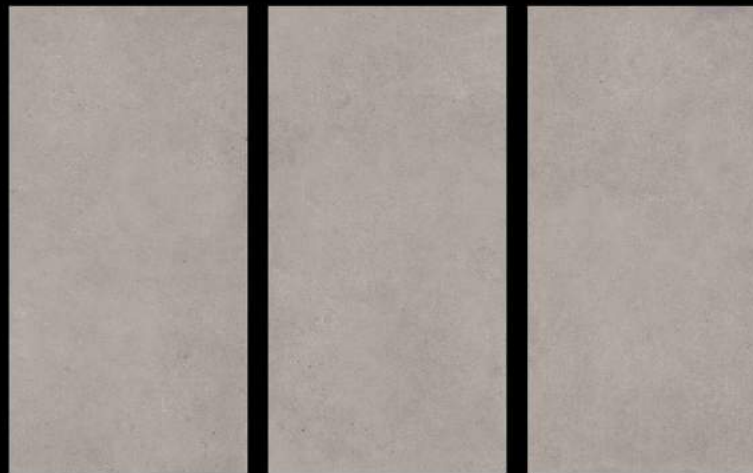
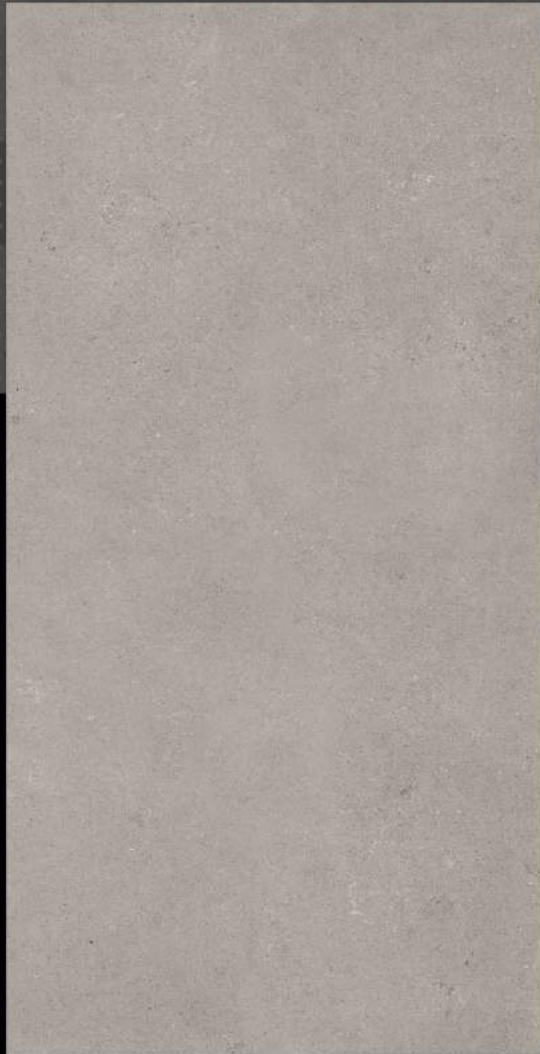


GVT



600x1200 mm
FINISH : MATT

MEDINA GRIS

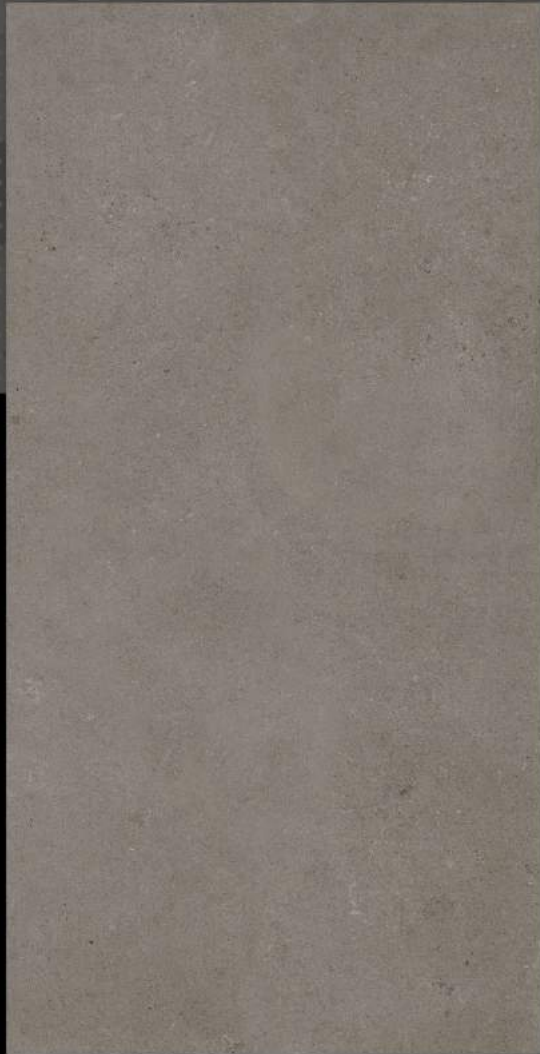


GVT



600x1200 mm
FINISH : MATT

MEDINA MARRON



GVT



600x1200 mm
FINISH : MATT

MEDINA NEGRO



GVT



600x1200 mm
FINISH : MATT

POZZOLANA BURLY



GVT



600x1200 mm
FINISH : MATT

POZZOLANA GREY



GVT



600x1200 mm
FINISH : MATT

POZZOLANA MARRON



GVT



600x1200 mm
FINISH : MATT

POZZOLANA SMOKE

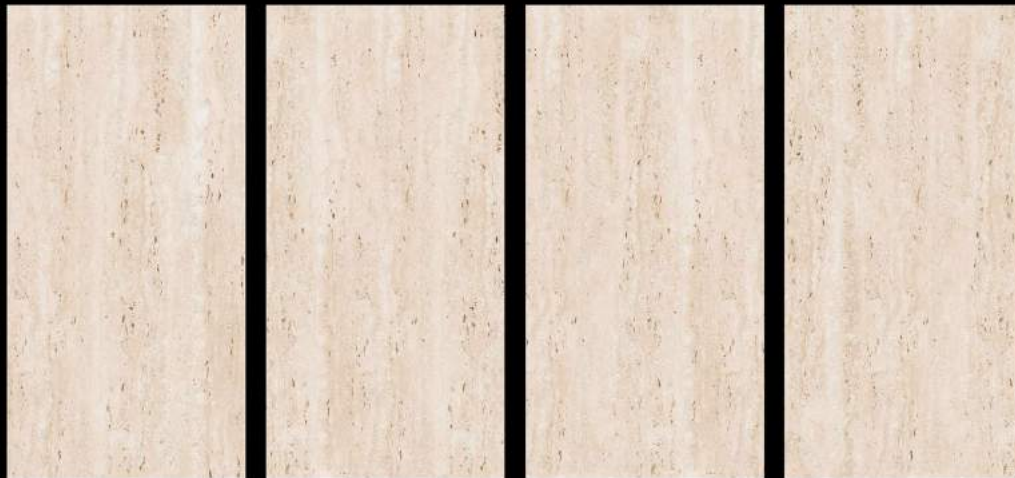


GVT



600x1200 mm
FINISH : MATT

TRAVO BEIGE

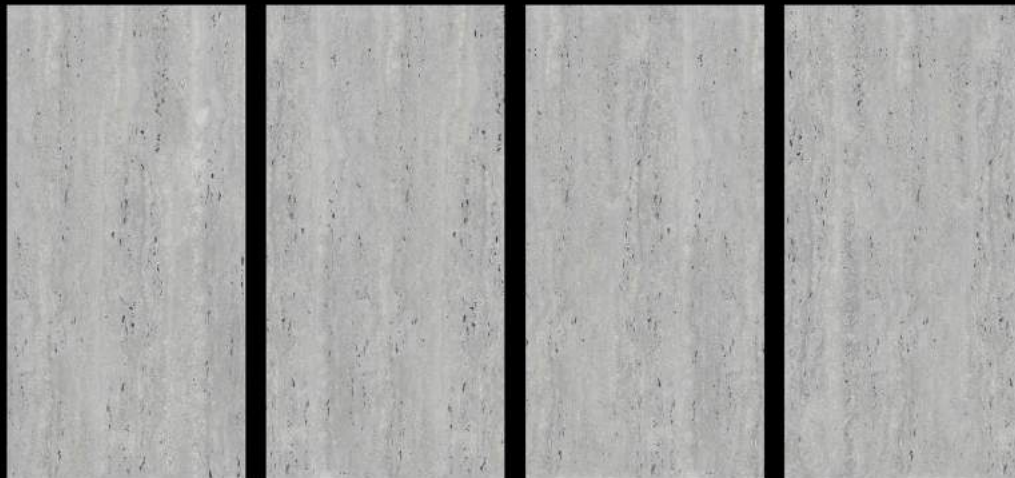


GVT



600x1200 mm
FINISH : MATT

TRAVO GREY



The image features a close-up of a light-colored wooden plank with a visible grain and several knots. The word "WOODEN" is centered horizontally across the plank. The letters are a dark, rich brown color with a wood-grain texture, making them stand out against the lighter background. The lighting is even, highlighting the natural texture of the wood.

WOODEN

GVT



600x1200 mm
FINISH : MATT

BARKWOOD OLIVE



GVT



600x1200 mm
FINISH : MATT

BARKWOOD HONEY



GVT



600x1200 mm
FINISH : MATT

BARKWOOD WALNUT



GVT



600x1200 mm
FINISH : MATT

BARKWOOD WENGE



GVT



600x1200 mm
FINISH : MATT

CARMEL CHOCO



GVT



600x1200 mm
FINISH : MATT

CARMEL GRIS



GVT



600x1200 mm
FINISH : MATT

CARMEL NATURAL



GVT



600x1200 mm
FINISH : MATT

CARMEL SAND



GVT



600x1200 mm
FINISH : MATT

MEXICAN ALMOND



GVT



600x1200 mm
FINISH : MATT

MEXICAN CHERRY



GVT



600x1200 mm
FINISH : MATT

MEXICAN NATURAL



GVT



600x1200 mm
FINISH : MATT

MEXICAN OAK



GVT



600x1200 mm
FINISH : MATT

MEXICAN SMOKE



GVT



600x1200 mm
FINISH : MATT

MEXICAN WALNUT



GVT



600x1200 mm
FINISH : MATT

PINEWOOD ALMOND



GVT



600x1200 mm
FINISH : MATT

PINEWOOD NATURAL

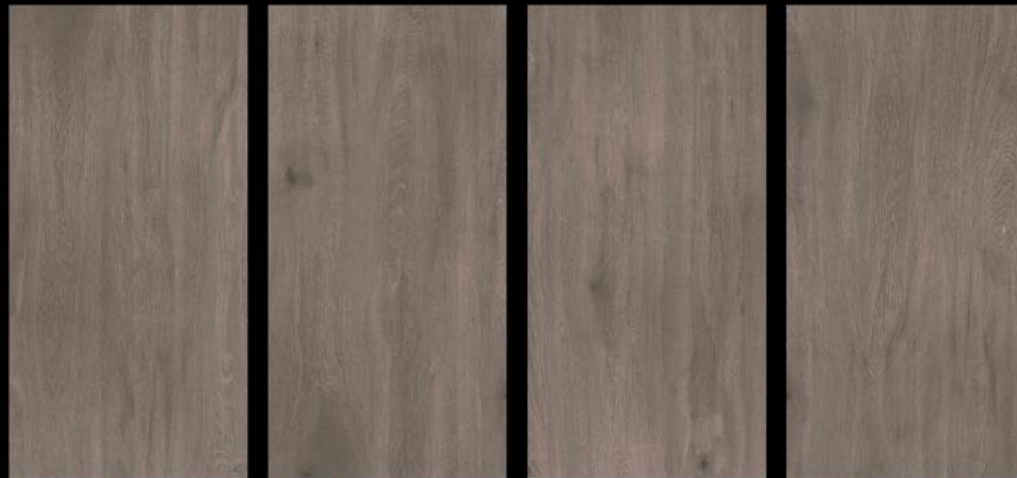


GVT



600x1200 mm
FINISH : MATT

PINEWOOD SMOKE



GVT



600x1200 mm
FINISH : MATT

SWISS ALMOND



GVT



600x1200 mm
FINISH : MATT

SWISS NATURAL



GVT



600x1200 mm
FINISH : MATT

SWISS OLIVE



GVT



600x1200 mm
FINISH : MATT

SWISS SMOKE



GVT



600x1200 mm
FINISH : MATT

TIMBER WOOD



GVT



600x1200 mm
FINISH : MATT

VINTAGE ALMOND



GVT



600x1200 mm
FINISH : MATT

VINTAGE SMOKE



TECHNICAL SPECIFICATION

SR.NO.	CHARACTERISTICS	STANDARD AS PER ISO-13006/ EN 14411 (GROUP)	VALUE	TEST METHOD
Regulatory Properties				
1	Deviation in Length & Width	±0.5 %	±0.2%	ISO-10545-2
2	Deviation in Thickness	±0.5 %	±0.5%	ISO-10545-2
3	Straightness of Sides	±0.5 %	±0.2%	ISO-10545-2
4	Rectrangularity	±0.5 %	±0.2%	ISO-10545-2
5	Surface Flatness	±0.5 %	±0.2%	ISO-10545-2
6	Colour Difference	Unaltered	No Change	ISO-10545-16
7	Glossiness	As per Mfg	>90%	Glossmeter
Structural Properties				
8	Water Absorption	≤0.50	≤0.05	ISO-10545-3
9	Apparent Density	>2.00 g/cc	>2.10 g/cc	DIN 51082
Massive Mechanical Properties				
10	Modulus of Rupture	MIN 35 N/mm ²	Min 40N/mm ²	ISO -10545-4
11	Breaking Strength	Min 1300 N	Min 2000 N	ISO -10545-4
12	Impact Hardness	As per Mfg	Min 0.55	ISO -10545-5
Surface Mechanical Properties				
13	Surface Abrasion Resistance	As per Mfg	Min Class 3	ISO -10545-7
14	Moh's Hardness	As per Mfg	Min Class 4	En 101
Thermo Hydrometric Properties				
15	Frost Resistance	No Damage	No Damage	ISO-10545-12
16	Thermal Shock Resistance	No Damage	No Damage	ISO-10545-09
17	Moistureexpansion	Nil	Nil	ISO-10545-10
18	Thermal Expansion	Max.9.0 X 10 ⁻⁴	Max.6.5 x10 ⁻⁶	ISO-10545-08
19	Crazing Resistance	As per Mfg	Min 10 Cycle	ISO-10545-11
Chemical Properties				
20	Chemical Resistance	No Damage	No Damage	ISO-10545-13
21	Stain Resistance	Resistant	Resistant	ISO-10545-14
Safety Properties				
22	Slip Resistance	As per Mfg	>0.40	ISO-10545-17
23	Fire Resistance	As per Mfg	Fire Proof	N.A

SIZE IN MM	THICKNESS	TILES/BOX	SQM/BOX	KG/BOX
600 X 1200	9 MM	2 PCS	1.44	30.00



FONTANA

TILES

Quality for Better Life